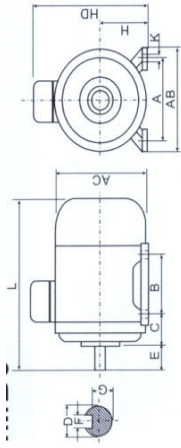


Y2+Y2E motori trifase IE1+IE2

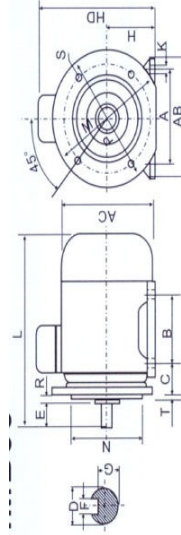
Y2+Y2E three phase motors IE1+IE2

DIMENSIONI DIMENSIONS

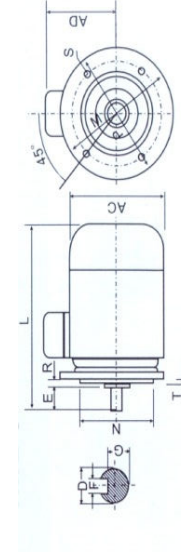
IMB3



IMB35



IMB5



FRAME SIZE	MOUNTING DIMENSION (MM)										FRAME DIMENSION (MM)									
	A	B	C	D	E	F	G	H	K	M	N	P	R	S	T	AB	AC	AD	HD	L
160M	254	210	108	42	110	12	37	160	15	300	250	350	0	19	5	314	325	270	425	615
160L	254	254	108	42	110	12	37	160	15	300	250	350	0	19	5	314	325	270	425	670
160LB	254	254	108	42	110	12	37	160	15	300	250	350	0	19	5	314	325	270	425	670
180M	279	241	121	48	110	14	42,5	180	15	300	250	350	0	19	5	349	380	288	455	700
180L	279	279	121	48	110	14	42,5	180	15	300	250	350	0	19	5	349	380	288	455	740
180LB	279	279	121	48	110	14	42,5	180	15	300	250	350	0	19	5	349	380	288	455	740
200L	318	305	133	55	110	16	49	200	19	350	300	400	0	19	5	388	410	310	510	770
200LB	318	305	133	55	110	16	49	200	19	350	300	400	0	19	5	388	410	310	510	770
225S	356	286	149	60	140	18	53	225	19	400	350	450	0	19	5	431	470	335	560	820
225M	356	311	149	55	110	16	49	225	19	400	350	450	0	19	5	431	470	335	560	845
225MB	356	311	149	55	140	16	49	225	19	400	350	450	0	19	5	431	470	335	560	845
250M	406	349	168	60	140	18	53	250	24	500	450	550	0	19	5	490	510	370	615	910
250MB	406	349	168	60	140	18	53	250	24	500	450	550	0	19	5	490	510	370	615	910
280S	457	368	190	65	170	20	58	280	24	500	450	550	0	19	5	542	580	410	690	985
280M	457	368	190	65	140	18	53	280	24	500	450	550	0	19	5	542	580	410	690	985
315S	508	406	216	65	170	22	58	315	28	600	550	660	0	24	6	628	645	530	845	1190
315M	508	457	216	65	140	18	53	315	28	600	550	660	0	24	6	628	645	530	845	1240
315LA	508	508	216	65	170	18	53	315	28	600	550	660	0	24	6	628	645	530	845	1310
315LB	508	508	216	65	140	18	53	315	28	600	550	660	0	24	6	628	645	530	845	1340